

# Simmarian

The Alumni Magazine of St Mary's College

Issue 15 2003

**W**elcome to the latest issue of the Simmarian Magazine and a special 'hello' to all of our 2003 graduates.

Firstly, I'd like to thank everyone who responded to the *Back on Track* appeal launched in our last issue. The appeal has been very successful but we still need your support. Further details are on page 5 and you'll also find an online donation form on our website ([www.smuc.ac.uk](http://www.smuc.ac.uk))

There have been a number of developments in the Alumni Office including the acquisition of a new alumni database. This is a versatile system which will enable us to respond to your enquiries quickly and accurately and will greatly assist with the production of *The Simmarian*.

During the long period of transfer from our previous system some of your details may not have been updated. Please tell us about any changes by completing the alumni reply form enclosed with this issue or complete the online reply form on the alumni pages at our website.

We continue to develop our services to alumni and a number of fact sheets are now available giving information on arranging reunions, contributing to *The Simmarian*, using the 'Friends Reunited' website, using the St Mary's Alumni Contact Service and obtaining alumni merchandise. If you would like a fact sheet, or information about any of our services, please contact the Alumni Office.

I do hope that you enjoy reading this issue of *The Simmarian*.

With my very best wishes

*Karen.*

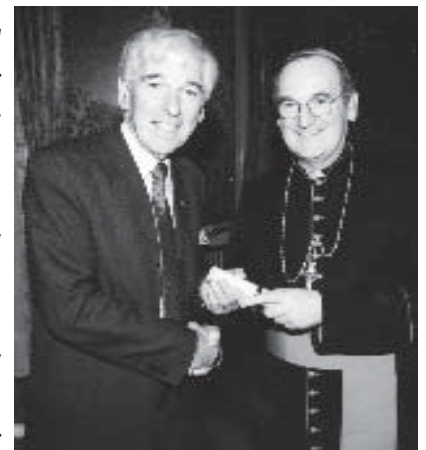
Karen Smith  
Public Relations and  
Alumni Officer



## Honorary Fellowships 2003

**T**om O'Connor, Mr Michael Power, Sister Dorothy Bell, Professor Eamon Duffy and Mr Luke Gormally were the recipients of Honorary Fellowships from St Mary's in January. Honorary Fellowships are conferred on people eminent in their chosen field who have made an outstanding contribution to society particularly where there is a close connection with the college, its mission and / or with the Catholic Church.

Entertainer and broadcaster Tom O'Connor is a former student of St Mary's and former President of the Simmarian Association. Another former student, Mr Michael Power OBE KSG is a former director of the Catholic Education Service. Sr Dorothy Bell RSCJ OBE is the former principal of Digby Stuart College and is the Southwark Diocesan Co-ordinator for AIDS related matters. Professor Eamon Duffy is President of Magdalene College and Professor in Church History in the University of Cambridge. Mr Luke Gormally KSG is a Senior Research Fellow and former director of the Linacre Centre for Healthcare Ethics and is also Advisor to the Catholic Bishops' Conference.



Tom O'Connor with Rt Rev Bishop George Stack

The new Honorary Fellows were presented to the Chairman of the Board of Governors, Rt Rev Bishop George Stack at a ceremony in the Waldegrave Drawing Room on January 31.

<b>Contents</b>	College News	2
	Alumni News	4
	Back on Track Appeal	5
	Sports News	6
	SHOC Report	7
	Chaplaincy News	8
	College News	9
	Simmarian Associations	10
	Alumni Merchandise	12

## LETTER FROM THE PRINCIPAL



I am very pleased to introduce this latest edition of *The Simmarian*. As I write this letter the college year is coming to an end. We recently held the Summer Ball, still the major social event in the student social calendar. Over 1200 students enjoyed a marvellous evening in fine weather. I am sure that

mention of the Summer Ball will bring back memories for many Simmarians of different generations.

For the staff of the college the last few months have been particularly busy. We have been given large increases in teacher training numbers next year, including four new PGCE Secondary subjects and increased numbers for the new Foundation Degrees in Sport Science and Education. With the completion of the new Education building, named the 'Manning Building' and to be formally opened by the Cardinal in late September, the School of Education has much needed new accommodation. The move of the school to a new building has led to a reorganisation of space in the rest of the campus. The result has been a stream of removals during the spring. By September we should have the accommodation changes almost over.

Next academic year we hope that at last the new running track will be in place to support the recently opened satellite centre of the English Institute of Sport, the first satellite centre in London. The opening ceremony in June by Steve Cram marked the start of an important initiative at St Mary's.

Across the five schools of the college, Education, Human Sciences, Communication Culture and Creative Arts, Management and Business Enterprise, and Theology, Philosophy, and History, there is much to look forward to in 2003-4.

With best wishes,

Dr Arthur Naylor  
Principal

## Undercover at St Mary's

The award winning broadcast journalist Donal MacIntyre, visited St Mary's in March to lecture on investigative journalism. He spoke to an audience of students and staff about his career in journalism and discussed some of the investigations he conducted as part of the groundbreaking television series *MacIntyre Undercover*.



Darragh Minogue and Donal MacIntyre

Darragh Minogue, Director of Media Arts, said, 'Donal's lecture was a great way to kick off the new Media Arts public lecture series. Donal enjoyed giving the lecture and he has kindly agreed to come back next year.'

## Contact Service

If you have lost touch with a fellow Simmarian, the Alumni Office may be able to help.

All information is held under the Data Protection Act. We do not give out individual's details without their prior consent. The Alumni Office will forward stamped mail or contact an individual on your behalf. Please inform us of any change of address and if you have details of a Simmarian who may not be on our records, please let us know.

## Careers Information Exchange

The Careers Information Exchange helps Simmarians to provide current students with information about professions in which they are interested. If you would like to be a representative for your profession please complete the Alumni Reply Card.

## Careers Services for Alumni

The St Mary's Careers Service is available to alumni for up to two years after graduation. Services include an individual analysis of career options, guidance on CV preparation, applications and interviews, use of careers software and use of the extensive careers library. Contact the Careers Service on 020 8240 4055 for further information.

Editor: Karen Smith

Design & Layout: Ruth Mellor

St Mary's College, Waldegrave Road, Strawberry Hill, Twickenham. TW1 4SX, UK.

College Switchboard: 020 8240 4000

Alumni Office: 020 8240 4039

Fax: 020 8240 4256

E-mail: [smithk@smuc.ac.uk](mailto:smithk@smuc.ac.uk)

The *Simmarian* is published once a year. All correspondence should be addressed to Karen Smith, Public Relations and Alumni Officer. No part of this magazine may be reproduced without the permission of the editor. The opinions expressed are those of the contributors and not necessarily those of St Mary's College.

© Copyright reserved. St Mary's College July 2003

Please accept our apologies if you have recently informed us of a change of personal details and this magazine has been sent to your former address. We are in the process of upgrading our database and a small number of records will not have been altered before this mailing.

## World Expert's Inaugural Lecture

Professor Michael Swan, the distinguished academic and author on English language teaching and applied linguistics, visited St Mary's in March to deliver his inaugural lecture as a Visiting Professor. He spoke about his theories on language acquisition and teaching to an audience of language specialists, colleagues and students.

St Mary's has an established reputation in the field of applied linguistics. For over twenty years, the college has run a Master of Arts degree programme in Applied Linguistics and English Language Teaching. The subject is also offered as part of our undergraduate degree programmes in English and the college also provides the Trinity College Certificate in TESOL (Teaching English to Speakers of Other Languages).

Peter Dewar, Director of the Master of Arts programme in Applied Linguistics and English Language Teaching said, 'Professor Swan is a world expert on the teaching of grammar. We are very fortunate indeed to have him as our Visiting Professor and look forward to his contributions to our conferences and our work in this important area.'

*Peter Dewar*

## Modern Foreign Languages Praised

St Mary's has received an excellent report in an OFSTED inspection of its primary education Modern Foreign Languages (MFL) programme. The college was one of only five teacher training institutions selected in 2000 to explore the possibility of offering French in primary schools and this inspection marked the end of the first phase of the project. Tutors and students received extremely high praise in all sections of the report.

The report stated that the MFL training programme was 'clearly defined', 'very well structured' and 'progressive' and that the course tutor was 'highly experienced and knowledgeable' about MFL teaching and training.

The inspection found that trainee teachers showed a 'fine range of effective teaching strategies, combining good MFL teaching with a clear understanding of good primary practice'.

## St Mary's Welcomes Local Schools

Throughout May and June, St Mary's provided University Experience Days for local schools. Students from Years 9, 10 and 11 visited the college to find out more about life at university. They attended taster sessions in a variety of university subjects, such as Drama, Sport Science, Geography, Media Arts, Business and English. They also learnt about degree level study skills, for example, how to make seminar presentations.

The students were given a tour of the college campus and current undergraduate students were available to offer advice. During their visit, some of the students worked on projects to present at assemblies to encourage their peers to broaden their education plans and study options.

Kevin Germaine, the college's Widening Participation Co-ordinator, said, 'we were delighted to welcome students from local schools and from across London. Many of the students will be the first in their families to have considered higher education. Our programme of talks and visits is designed to widen students' horizons to the opportunities available to them by taking a university degree. At the same time, these visits help demystify some of the common preconceptions about the types of people who study at university.'

For further information about the Schools Link Project call Kevin Germaine on 020 8240 4120 or Teresa Kelly (Head of Educational Liaison) 020 8240 4156.

## New Careers Centre Opened

On Monday May 12, the new premises for the St Mary's College Careers Service were officially opened by Dr Naylor, together with Anne-Marie Martin, Director of the University of London Careers Service. The facility provides an extensive library of information on careers, further study, funding and employability. Private offices are available for confidential discussions with careers advisers and there is a multi-media area for students' use. Throughout the year, the service offers students opportunities to meet employers and develop career management skills. The Careers Service also organises events including graduate careers fairs, a first teaching appointment fair, employer forums and on-campus interviews and workshops.



Anne-Marie Martin, Arthur Naylor and Karen Barnard

The Careers Service at St Mary's is now part of the University of London Careers Service consortium (ULCS), which serves over eighty thousand students within the University of London and is managed by Karen Barnard of the ULCS.



## Alumni Profile



Cathy Ota (1996-99) is a Research Fellow at the University of Brighton currently working on a four-year project about pupils' group work skills in classrooms. After leaving St Mary's, she completed her Master of Theology and then spent seven years as a researcher with an educational research project whilst working towards her PhD. She is co-editor of *The International Journal of Children's Spirituality* and convening manager for its annual associated conference. Cathy recalls 'happy memories' of the 'close knit and friendly' community at St Mary's and the chances it gave her to develop both academically and personally. She remains close to the many friends she met at college.

## Queen's Birthday Honours

Martin Roddy (1973-76) an Executive Support Officer with the police force, has been awarded an MBE in the Queen's Birthday Honours. Martin has been a police officer for 23 years and was also honoured by HRH the Prince of Wales in 2000 for his community and charity work. Martin says that he is overwhelmed but 'incredibly honoured' to receive his MBE. He was president of the college rugby club in 1975 – 76 and is 'very proud' of his links with St Mary's.

Former lecturer Jean Gooding has been awarded an MBE for services to education. Jean has been involved with school governance for many years and lectured in English literature at St Mary's.

## Alumni News



In 2002, Honorary Fellow Pete Postlethwaite attended a retrospective of his films at the Riverside Studios, Hammett. A number of members of his drama year group were present including fellow actors Eamon Boland and Mike Melia present, along with Mike and Liz Wood (nee Peck), Larry Adams and former lecturer Joan Riley (pictured). Last year, Joan also attended the ordination of Tony Mitchell (1964-67) in Poitiers Cathedral. Joan travelled with Fr Rober Plourde (1964-67).

## Mirror Image

Simmarian Bryan Colman Bird's anthology of poetry was published in 2001. His book, *A Passing Thought*, includes three poems about St Mary's. The following poem is about the legend of the ghost of Lady Waldegrave who is said to appear in the mirror near the Principal's corridor.

*And what of the student in the night  
Is claimed to have had his hair turned white,  
When he saw the ghostly figure of a lady  
Reflected in the mirror, although rather hazy;  
Did Lady Waldegrave really end her life  
By slitting her throat with a gilt-handled knife,  
In front of the mirror at the top of the stair?  
It's no wonder such a spectre discoloured his hair!*

## Where is Where are They Now?

We have been unable to include *Where are they Now* in this issue. Please keep us updated by returning your Alumni Reply Card if you would like to feature in the next issue.

## Surf for Simmaries

Did you know that the Simmarian is also published on our website at [www.smuc.ac.uk](http://www.smuc.ac.uk)? Please let us know if you would prefer to read the Simmarian online rather than receive a postal copy.

## An Eventful Location

If you're planning a special event, why not consider holding it at Strawberry Hill? The college makes an ideal setting for wedding receptions, balls and parties. A number of function rooms are available including the magnificent Waldegrave Drawing Room and the Long Gallery in Walpole House. We can provide a varied selection of high quality menus from buffets to banquets. Over the years, many celebrities have held events at Strawberry Hill including Sir Mick Jagger and Sir Bob Geldof.



The college is also a popular venue for conferences during vacation time, offering facilities ranging from meeting rooms to large halls and tiered lecture theatres. There are also residential facilities for over five hundred delegates.

Strawberry Hill is also regularly used as a location for film and television shoots. Over the past year we have hosted crews from GMTV, BBC, Carlton, Channel Four and Granada.

If you would like further information about our facilities, please contact the Conference Office on 020 8240 4044 or 020 8240 4311

From the Archives



This picture of the St Mary's Country Dance Band was taken in 1959. The band played to a large audience at college every Sunday evening and also appeared at charity events and visited local hospitals. The band was

awarded second place in the final of a BBC TV competition and was also featured on BBC radio.

Pictured left to right (front row) are Patrick McNicholas, John Topping, Bernie Loughlan, Kevin Durkin and Dominic O'Connell. On the back row (left to right) are ?, Graham Hogben, Tony Haycock, ?, ?, and John Farqhar.

If you can help us to identify the 'mystery' Simmarians please contact the Alumni Office.

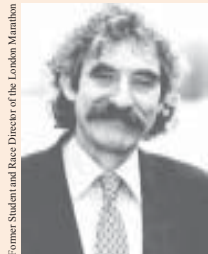
**We need you!**

As alumni of St Mary's you are in an excellent position to spread the word about all the advantages of studying at the college. You may work as a teacher in a school or college in which case you can call us to arrange a visit from a college representative to talk to your students about St Mary's.

If you know anyone who might want to find out more about foundation, undergraduate or post graduate study, call us on 020 8240 2314 or 020 8240 4156 or email [kellyt@smuc.ac.uk](mailto:kellyt@smuc.ac.uk). We will be more than happy to help or return the flyer enclosed in this issue of the Simmarian.

**Running Track Appeal**

The college is now the UK Athletics Endurance Performance Centre, providing much support to emerging young talent and elite runners. We can now do a lot more to encourage young athletes in schools and clubs - in all aspects of track and field athletics. The college has been given funding towards a new track and the project is supported by the London Marathon but we are still short of our target.



Former Student and Race Director of the London Marathon  
Dave Bedford

**HELP US BY SPONSORING A PORTION OF OUR TRACK AT £25 PER HALF-METRE**

Your donation will be permanently acknowledged alongside the track. Sponsors who give over £1000 will be recognised on a special commemorative plaque and will be our guest at the launch event. If you sponsor a half-metre of track (or more) you will be entered into a draw to win a VIP place at the track launch event.



Olympic Athlete and Local Resident  
Sonia O'Sullivan

Everybody who donates to the appeal will receive a Back on Track Sponsor certificate as a record of their contribution.

**RUNNING TRACK APPEAL FORM**

I would like to sponsor \_\_\_\_\_ half-metre sections of track at £25.00 each

I enclose a cheque for £ \_\_\_\_\_ made payable to **St Mary's College**

Name: \_\_\_\_\_ Years of Study at St Mary's \_\_\_\_\_

Address: \_\_\_\_\_

Tel: \_\_\_\_\_ Email: \_\_\_\_\_

Please send your cheque to  
PR and Alumni Office  
St Mary's College  
Waldegrave Road  
Twickenham  
TW1 4SX  
Tel: 020 8240 4039  
[smithk@smuc.ac.uk](mailto:smithk@smuc.ac.uk)

DECLARATION - I wish St Mary's College to treat my donation as Gift Aid. Signed: \_\_\_\_\_ Date: \_\_\_\_\_

Inland Revenue: X73586

## Sports Report

2003 was yet another impressive season for the St Mary's athletics squad. Both the men's and the women's cross-country teams repeated last year's success by winning the London Colleges League and Faye Fullerton won a silver medal in the BUSA Cross-Country Finals held at Oxford. In the BUSA Outdoor Championships Andrew Frost once again won the hammer event with a throw of 64.96 metres, almost equalling last year's record throw of 65.01 metres. Andrew's performances resulted in his selection for the BUSA international meet that took place at Loughborough University.

The men's 1st XV rugby union side qualified from the Premier South League gaining notable wins against University of Wales and Cardiff, Bath, Bristol and Brunel West London. Unfortunately the team lost in the last sixteen of the championship, when Bristol beat them in a close game. The strength of men's rugby union at St Mary's was reflected in the selection of Neil Hallet, James Burton, Rob Hunt and Oliver Hoad for England Universities. Oliver graduated this year and will start as a full-time professional with London Irish Rugby Football Club. The men's 2nd XV won the South Eastern Trophy by winning all ten group games, losing to Loughborough in the trophy quarter-finals.

The St Mary's women's hockey team qualified from the Premier South League with significant wins over Oxford, Brunel West London and Exeter. The team beat Newcastle in the last sixteen but lost to Loughborough, the eventual winners, at the quarter-finals stage. The women's 2nd team demonstrated the squad's strength by finishing joint first in the South Eastern Trophy.

The cricket season started with the men's 1st XI losing in a tight game by two wickets to Exeter, this year's Championship finalists. The 1st XI eventually finished equal third in the Premier South League with Cardiff University Centre of Cricketing Excellence gaining them a playoff game away to Cambridge. Due to wet weather an extremely frustrating day culminated in the St Mary's team being beaten in a bowl out by the Cambridge side. Tim Murtagh yet again represented Great Britain Universities in their game against the touring Zimbabwe side. Tim has already played on a number of occasions for Surrey County Cricket Club 1st XI and after graduating this year will become a full-time member of the professional staff. Jean-Paul Laurent was selected for the successful England Universities side at the Home Nations Tournament played in Edinburgh. The women's 1st XI had another successful season easily winning the South Eastern 1A but losing in the last sixteen of the Championship to Oxford UCCE.

The St Mary's women's football team won the South Eastern 1A without losing a single game, scoring forty-nine goals and only conceding ten. The team lost to Brighton in the last sixteen but beat Bath, finalists in the championship, for a place in next season's Premier League. The women's squad is working closely with Barnet Football Club and is aiming to become

a Football Association affiliated academy. The men's 1st XI came top of the South Eastern 2A winning seven of their ten fixtures and gaining promotion whilst the 2nd XI lost in the trophy semi-final to Loughborough.

St Mary's women's lacrosse team finished second in the South Eastern 1A with a noteworthy win against Brunel West London. The team made it all the way to the Shield final by beating East Anglia and York but lost to Warwick in the final game.

The St Mary's Gaelic teams had yet another excellent season. The men's team won the British Universities Gaelic football Championship by beating Liverpool John Moores in extra time and subsequently qualified for the Trench Cup. The women's team also won the British Championship by defeating Liverpool Hope and went on to play in the Lynch Cup, winning the McNally Plate against Jordan Town, University of Belfast.

The continued success of St Mary's teams demonstrates the high performance culture that currently exists at the college. It is this environment that convinced the English Institute of Sport to base their London region satellite service centre at the college.

*Andrew Reid-Smith*

## English Institute of Sport Launches London's First Satellite Centre

The EIS is the organisation formed to develop the nation's elite sport and its first satellite centre has been opened at St Mary's. The centre was launched by the EIS Chairperson, Steve Cram at a ceremony in June. The centre provides a range of sport science, sports medicine and technical support



*Arthur Naylor, Steve Cram and Dick Fisher*

services to out top performers in a number of sports. The designation of the college as the first centre in London is a reflection both of our high reputation in sport and this,



# shoc

alongside the National Endurance Performance Centre, has placed St Mary's in the top echelons of university sport in the UK.

*Dick Fisher*

## St Mary's Celebrates Athletics Success

The UK Athletics Endurance Performance Centre, based at St Mary's and supported by the London Marathon, celebrated a highly successful inaugural year in 2002. In addition to the college's dominance of the London College's Cross-Country league there have been a number of notable individual successes.

Kate Reed was selected for the Great Britain Women's Team for an international relay in Japan and, over a 5km leg, ran the fastest recorded time ever by a British runner over that course. In the process she beat the current world 5000-metre track champion, Olga Yegorova. In Croatia, Charlotte Dale became the European Junior Cross-Country champion, leading the English Junior Women's team to victory in the team title. Mohammed Farah ran in the junior men's team in the same championship and came a creditable 30<sup>th</sup>, having only recently recovered from a long-term injury. Also notable in the past year was the return to form of James McIlroy, who put up good performances in the Commonwealth Games and in the European championships.

## Strawberry Hill Overseas Concern (SHOC)

Shortly after submitting my article for the last issue of the *Simmarian*, I received a letter from Michael (1964-1967) and Stephanie Pioli (1968-1971). For the past year, Michael has been President of the Huddersfield Catenian Circle and he was writing to say that he had chosen SHOC as his presidential charity. His target was to raise £2000 for a SHOC project overseas.

I responded by nominating the work of Brother Joachin Naah (1997-2000) in northern Ghana. In May of this year Michael and Stephanie came to Strawberry Hill and presented SHOC with a cheque for £2025; the result of their year's charity work. The money is now on its way to Tumu Ghana where we know it will be put to very good use by Joachim and his staff.

The Huddersfield Catenians' donation to SHOC's work was one of many cheques we received during the year. I cannot include all of these and, indeed, many donors would prefer

to remain anonymous. However, I feel I must mention the money we received from the students' annual carol singing in London and from the Rag Week. We also raised several hundred pounds from the sale of Christmas cards within college.

This has meant that, over the year, we have been able to distribute nearly £5000 to projects overseas. Apart from Joachim's school, we have been able to help the Social Training Centre in Singida, Tanzania. We learned of their wish to develop a library facility for the local people through St Mary's lecturer Elizabeth Byrne Hill. Elizabeth's has long-standing links with the Singida community and she was able to deliver our contribution to their work personally on a recent visit. We have since received a letter of thanks with pictures of the opening of the library

We have also been able to help the work of the Vincentians in Nigeria, Sister Mary Gallagher and her community in Sierra Leone, Mark Wiggins in Uganda,



Fr Gerry Devlin, Dr Kevin Cook, Ken Breen, Dr Arthur Naylor with Michael and Stephanie Pioli

Dee Smith in Guatemala, the Sisters at Marigat in Kenya and Brother Raphael in Accra, Ghana. We have also provided a small amount of help for a second year student who is spending her summer vacation teaching English at a school in Sri Lanka. As well as providing her with money to purchase resources for the school, we are also looking into ways of helping fund some of her personal costs whilst overseas.

It has been a very successful year once again for SHOC, we are immensely grateful to students, past and present, for their continued support. Those of you who wish to contribute to SHOC's work on a regular basis can do so via the *Give it as you Earn* scheme within college or by contacting the Charities Aid Foundation on 01732 520011. Individual donations can be sent to me at the college. Please make your cheques payable to Strawberry Hill Overseas Concern. Many thanks for your tremendous support. Your donations are always very gratefully received and always well used.

*Kevin Cook*

## Facts and Figures

### Walpole House

Walpole purchased the house in 1749 for £776.10s  
He extended the size of the Strawberry Hill estate from 5 to 46 acres  
Walpole owned the house for 50 years

## Chaplaincy Report

This year has been an extremely busy one for the Chaplaincy and it has been most pleasing to see so many students involved in Chaplaincy groups and activities.



Rebecca Hughes

Miss Rebecca Hughes was appointed as the Assistant Chaplain. Rebecca graduated from St Mary's in 1996 and has worked with the Augustinian Fathers as part of the core team developing youth ministry at regional, national and international level. Rebecca worked as a pastoral assistant at St Francis of Assisi, Notting Hill before her move to St Mary's.

This year the Chaplaincy has once again raised a great deal of money for local and international charities. Our Annual Carol Singing appeal in London raised £7200 and our Lenten Appeal £1300 for the St John Bosco Teaching Training College in Ghana. In February the Chaplaincy organised an evening for former students with the help of the Simmarian Association and we raised £1300 for charity. The Christian Union hosted a Retreat Week at St Mary's and £1200 was collected for an orphanage in Ghana. The Simms Lourdes group this year was also successful in raising £2200 to ensure that young people with learning disabilities could travel to Lourdes at Easter.

Our Annual Leavers' Mass was celebrated in a packed college Chapel on Pentecost Sunday. The Annual Lenten Retreat took place at Cumberland Lodge, Great Windsor Park in March and was enjoyed by all the students who took part.

The Chaplaincy is also involved in developing the Active Community Fund to create new opportunities for volunteering and community involvement in the new academic year.

*Fr Gerry Devlin*

## Archbishop of Westminster Lectures at St Mary's

His Eminence Cardinal Cormac Murphy O'Connor, Archbishop of Westminster, visited St Mary's last October to lecture on 'Authority in Church and Society.'

In his lecture the Cardinal stated that authority in the Church should be directed towards service and authority in society should be directed towards the common good, 'respecting the fundamental and inalienable rights of the human person'. His Eminence added that authority should be 'founded on truth, built up in justice and animated by love'.

## Choir Festival Attracts Record Numbers

This year, St Mary's hosted and participated in the three-day Church College Choir Festival for the first time and succeeded in attracting a record-breaking

number of choristers. As part of the festival, over 200 students assembled at the Great Hall at Hampton Court Palace on March 1 for a rousing performance of English Church music. The choir festival brings together staff and students from



Musical Director June Boyce-Tillman conducting in the Great Hall at Hampton Court Palace

Church colleges throughout England and Wales. In addition to singing at Hampton Court Palace, the choirs performed at the Landmark Centre in Teddington and in the college chapel.

Each of the nine choirs, who had travelled for the occasion from Lincon, Lancaster, Winchester, York, Chichester, Birmingham, Chester and Canterbury, sang as individual choirs as well as combining in a mass chorus for the first performance of *The Greening Branch*, a piece specially composed for the festival by its Musical Director June Boyce-Tillman.

Dr Naylor said, 'St Mary's was delighted to welcome so many talented performers to the festival. The quality of the singing and the music was outstanding and the festival was a rewarding and enjoyable experience for everyone involved.'

**Our next Undergraduate Open Days will take place on**

**Saturday 20<sup>th</sup> September**  
**Wednesday 22<sup>nd</sup> October**  
**Wednesday 29<sup>th</sup> October**

*Potential students and their families and friends can visit the campus and hear more about the courses on offer.*

Visitors should book in advance on

**020 8240 2314**

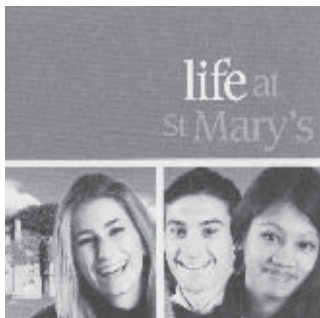


## Life at St Mary's

*Life at St Mary's* is the new theme for publicity materials aimed at potential undergraduate students this year. The prospectus, leaflets, posters and exhibition stands reflect the *Life at St Mary's* theme emphasising that academic life, social and sporting life and the location of the college can lead to an excellent student life and future working life for those who join us.

## The Changing Face of St Mary's

*St Mary's* continues to respond to changes in demand from potential undergraduate students. Cultural Studies and Tourism have recruited for the first time in 2003 and five exciting new courses will be available for entry in 2004; Philosophy, Film and Television, Sport and Physical Education in the Community, Physical Theatre and Sport Health and Exercise Science. Meanwhile, the increase in the allocation of teaching places means that teacher training remains extremely important to the college.



## Building firm Foundations

The Foundation Degree in Children and Young People Learning which began in April 2002 has been extremely successful. Students study one day per week while working with children in schools as classroom assistants or other care settings. Foundation degrees are opening up opportunities for people who are working to gain access to higher education. *St Mary's* is fully committed to the initiative and is developing a foundation degree in Sport and Health in conjunction with Richmond College which is due to start in January 2004. Other foundation subjects are currently under discussion for those working in education and the public sector.

## School of Theology, Philosophy and History

The School of Theology, Philosophy and History has developed a number of additional postgraduate courses. In 2002 a new postgraduate course in Bioethics was validated, unique in the UK in considering medical ethical issues within the context of theology. For details contact David Jones at [jonesd@smuc.ac.uk](mailto:jonesd@smuc.ac.uk). A new programme has been developed by the school in Pastoral Theology and Catechesis. These will also run in Exeter and Portsmouth

recruiting students from the South and West of England. Contact Michael Hayes [hayesm@smuc.ac.uk](mailto:hayesm@smuc.ac.uk) for further information.

## PGCE News

*St Mary's* has been awarded an increase in the number of students to be accepted onto our PGCE courses. Vocational subjects are becoming increasingly popular as the school curriculum changes and new subjects, including IT, Design and Technology, Health and Social Care and Business Studies, will be on offer from September 2003 in addition to our well-established subject areas. For details contact Paula Askew on [askewp@smuc.ac.uk](mailto:askewp@smuc.ac.uk)

## New Language Teaching & Training Unit

The School of Communication, Culture & Creative Arts has established a Language Teaching & Training Unit (LTTU) to build upon the success of its current activities in TESOL training courses and to develop the teaching of English to non-native speakers.

The initial and primary focus of the LTTU is to recruit overseas students for an English Language & Academic Culture module which will provide students with language and study skills, along with the cultural orientation necessary to follow undergraduate and postgraduate programmes at *St Mary's*.

Future developments will include short courses in general English, evening classes in Modern Foreign Languages, and tailor-made training courses for groups. In the longer term, the LTTU intends to broaden the type and level of its teacher training with initial and refresher courses for overseas teachers, and the development of a *St Mary's* TESOL Diploma.

The LTTU is keen to hear from Simmarians who can help to promote its activities in overseas schools, higher education institutions and corporations. If you can help by providing a useful institutional address, the name and contact details of a training manager, or acting on behalf of the LTTU as an Educational Consultant please email Steve Horne ([hornes@smuc.ac.uk](mailto:hornes@smuc.ac.uk)) or Ian Ferguson ([fergusoi@smuc.ac.uk](mailto:fergusoi@smuc.ac.uk)) with your contact details.

## Masterminds

*St Mary's* is currently offering masters degrees in a range of programmes including:

- Applied Linguistics and English Language
- Catholic School Leadership
- Chaplaincy Studies
- Pastoral Theology
- Education (CPD for School Improvement)
- Religious History

Do contact us if you would like to find out more about them.

# simmarian associations

**The Simmarian Association AGM** will be held on Saturday September 6, 2003 at 11.30 am in Room C1 (the old college chapel). Every former student is invited to the AGM, so do come along if you can and support your association.

**The Annual Mass for Deceased Simmarians** will be held on Sunday November 9, 2003 at 11.00 am in the college chapel.

## Gibraltar Simmarians

The Gibraltar Simmarians held their AGM at the International Police Club premises on Thursday, 12th June 2003. As usual the meeting was well attended with business matters delicately interlaced with a selection of Mediterranean seafood, a sprinkling of Rioja wine and a serious quantity of English beer.

The decision was taken to make a donation to Sister Patricia's recently opened school in Peru. Sister Patricia is a Loreto nun who worked in a private school in Gibraltar for a number of years before she left to set up a school for poor children in South America.

*Clive Beltran*

## Liverpool Simmarian Club

Our lunch meetings take place at 12 noon at the Hightown Hotel on the last Thursday of each month. The Annual Mass for Deceased Members was celebrated on November 30 and we remembered those who had died during the year. The annual Christmas lunch took place on December 19 and was attended by twenty-eight members. Mick Lyonette was absent, having been called into hospital for an operation. He sadly died a couple of weeks later. Mick was a loyal and ardent supporter of the club and his loss is felt very much.

*Frank Harris*

## Liverpool Simmarian Club Benevolent Section

It is with feelings of great regret that I have to announce that the funds which still remain to help those dependents of teachers who were and are still in need, will run out in December 2003. The earliest records we have indicate that loans and grants began in the later 1920's. Our financial records show that over £100,000 has been paid to teachers and their dependents.

As the present secretary of the Benevolent Section I must mention the work of the last two treasurers, Bill Cogley (RIP) and Jim Moran. Through football sweeps and various annual events money was raised in most Catholic schools in the Liverpool area and Jim made shrewd investments which yielded handsome dividends. I must also thank the sweep representatives and all those who have given to our funds over the years. Certainly you have taken the spirit of our college's motto and shown the kindness and generosity for which our Mother is known.

*Terry Roose*

## Leeds Club

The Leeds Club meets for lunch on the second Saturday of every month. For further information, contact Richard Mill on 0113 2047863.

## Manchester and District Simmarians

Our Annual Mass was celebrated on December 6 in the beautiful chapel at the Alexian Care Home and was followed by refreshments. The Celebrants were Fr Frank Austin (1946-48) and Canon Tony Doran (1945-47). Simmarians in attendance ranged from students of the 1940's to the 1980's. It was a most successful venture and the numbers in attendance must be an indication that, though we see a gradual erosion in our number, there are many who hold their association with the college in their esteem.

*Kevin Madden*

### Forthcoming Reunions

#### Did you leave college in 1975?

John Booth and friends are planning another reunion at Strawberry Hill in 2005. If you would like to be invited, please send your details to John at [idlebooths@blueyonder.co.uk](mailto:idlebooths@blueyonder.co.uk), Jim Hunston at [jameshunston7@hotmail.com](mailto:jameshunston7@hotmail.com) or Frank Sudlow at [Sudlows@compuserve.com](mailto:Sudlows@compuserve.com).

#### 1959 and 1960 Freshers

**September 6, 2003. Student Union Bar 7 – 11pm**

Join Chris Curtis and friends at the 2003 reunion for Simmarians who came to college in 1959 and 1960. Contact the alumni office for a booking form or e-mail Chris at [chriscurtis@aol.com](mailto:chriscurtis@aol.com) for more information.



Year group members are automatically sent letters of invitation to their reunion, approximately three months in advance. If you would like further information about any of the above reunions, or would like a fact sheet about arranging your own reunion, please contact the Alumni Office.

# simmarian associations

## 1944-46 Reunion Report

As mentioned in Liverpool Club report, Mick Lyonette (RIP) passed away just after Christmas. Mick was a dedicated and loyal Simmarian and it was my privilege to know him and assist with his group's regular reunions at Strawberry Hill. Extracts from his last reunion report are printed below - Karen Smith

The 1944-46 group joined Father Alex Fleming to celebrate his forty years in the Priesthood and presented him with a cheque to mark the occasion. Fr Alex became the group's chaplain in 1994 and has been the Liverpool Simmarian Club chaplain since the 1960's. In August 2002 the group celebrated our ninth successive reunion, held at Fr Alex's parish in Lancashire and attended by twenty-four members and wives. The group visited a number of local sites of interest and enjoyed our traditional self-inflicted entertainment where good ale was quaffed and good songs were sung. The Reunion Mass was the highlight of the reunion, celebrated by Fr Alex at St Chad's Church and followed by a champagne buffet. The group then visited a medieval church in Brindle and so our happy reunion ended to be repeated in 2003 and ad infinitum? Would that that could be so!



Mick Lyonette

## 1952-54 Reunion Report

The 1952-54 reunion organised by Ted Balmer at Strawberry Hill proved to be a real success. Nineteen members of the group travelled from all over the UK and from overseas and celebrations included meals on three evenings in local restaurants. A happy time of renewing old acquaintances and much reminiscing of college life fifty years ago was enjoyed by all.

Bernard Grady

## 75 Years Ago

Many avail themselves of the luxury of the smokeroom as the nearest approach to being in the North. Owing to various causes we have been unable to extend our activities beyond sweeps, impromptu dancing and community singing. We hope that in the future things will be made more interesting and amusing by the permission to hold whist drives in the smokeroom. M.J Rafferty. *The Simmarian*. Whitsuntide 1928.

## 50 Years Ago

The Photographic Society has been covering all local events including the visit of Alec Guinness and Miss Joan Greenwood to the grounds where they shot some scenes for the forthcoming 'Father Brown' film. This picture will have strong associations for all Simmarians since the church chosen to be Father Brown's is 'our' old parish church of the Holy Trinity, Brook Green. T.Quirk. *The Simmarian Newsletter*. December 1953

## 25 Years Ago

The Waldegrave Ballroom was again filled for the visit of Lord Longford who presented his well-known and liberal views on prison reform, illustrating them with references to his conversations with Myra Hindley, the Kray twins and other less famous (or infamous) prisoners. His talk on this very emotive topic produced a flood of questions and some lively debate which left the audience with much to ponder over. Paul Cowan. *The Simmarian Newsletter*. Winter 1978

## Rest In Peace

News of the death of the following Simmarians has been received. Please remember in your prayers these Simmarians, their families and their friends.

Anthony Biglin 1948-50 Scarborough	Albert Halsey 1956-58 Alcester	Barry Murphy 1997-98 London
Owen Craddy 1947-49 Kent	James Healy 1935-37 Liverpool	Des Murphy 1950-52 Manchester
Donal Currie 1944-46 Northern Ireland	Michael Howard 1968-71 Cumbria	John (Jack) O'Hara 1940-42 Liverpool
Michael Dalton 1959-61 Cambridge	Joe Hughes 1937-39 Manchester	Desmond Platt 1944-46 Merseyside
Michael Darmody 1970-73 Ireland	Peter Keyte 1953-55 Isle of Wight	Gordon Price 1947-49 Devon
Clifford Davies 1942-44 London	Jack Kilshaw 1943-45 Preston	Peter Quinn 1950-52 Widnes
Michael Dooley 1939-41 Manchester	John Knowles 1965-68 Sheffield	Noel Radford 1949-51 Tenby
Arthur Doran 1931-33 Co. Down	Charles Kreling 1933-35 Harlow	William Stormont 1937-39 Harrow
Kevin Drury 1970-73 Middlesbrough	Austin Littler 1935-37 Wigan	Jack Sudworth 1942-44 St Helens
Bill Duffy 1945-47 Liverpool	Mick Lyonette 1944-46 Liverpool	Paul Taylor 1982-86 Kingston
Jim Feeney 1944-46 Manchester	Donald MacPherson 1938-40 Sutton	Thomas Wallace 1942-44 St Helens
Victor Finbow 1935-37 Ipswich	Vincent Mastin 1946-48 Middlesbrough	Caroline Walsh 1997-2000 London
Frank Finn 1945-47 St Helens	Brian McCarthy 1956-57 Woking	Alexander Wright 1959-61 Italy
David Fleetham 1991-96 Tyne & Wear	Denis McCormack 1943-45 Sunderland	
Sr Margaret Fox 1997-98 London	Gerry McGoldrick 1957-59 Nuneaton	
Joseph Glynn 1934-36 Birmingham	James McGrail 1943-45 Liverpool	
Edmund Goggins 1954-56 North Wales	Joe McHugh 1930-33 Manchester	
Edward Gormley 1952-54 Australia	Terry Minker 1953-55 London	



### Former Staff

Fr Dermot O'Dowd, former lecturer in Education at St Mary's passed away in February 2002.

Dennis Maccagno, former lecturer in the Geography Department, passed away in February 2003.



# The St Mary's College Credit Card

## Help St Mary's at No Cost to You!

For further information contact MBNA on this free number  
(charges may apply to mobile phone users)

0800 028 2440

## St Mary's College Alumni Merchandise

Our book, '150 years of St Mary's College', gives a full account of our fascinating history. This beautifully presented volume includes many previously unpublished photographs.

The college badge, featuring our coat of arms in full colour, is an inexpensive way of showing the world that you are a Simmarian. Our bear sports a white ribbon embroidered with the coat of arms in blue and is produced by one of the world's best-known toy manufacturers. The tie is in blue fabric and features the coat of arms in full colour. Finally, the limited edition blue and white porcelain anniversary mug will brighten any coffee break.

Please complete the order form and post to: The Alumni Office, St Mary's College, Waldegrave Road, Twickenham, TW1 4SX.

Your order should be dispatched within fourteen days of receipt.



**There may be a surcharge for overseas deliveries, please contact the Alumni Office for further information.**

Badge	£0.99	<input type="checkbox"/>	I enclose my cheque/ postal order (sterling only) for the total amount payable to: St Mary's College.	
Teddy Bear	£11.99	<input type="checkbox"/>	Please deliver to:	
Coat of Arms Tie	£7.99	<input type="checkbox"/>	Name:	_____
Gothic Window Tie <small>(old design)</small>	£5.99	<input type="checkbox"/>	Address:	_____
Anniversary Mug	£5.99	<input type="checkbox"/>		_____
150 Years of St Marys	£8.99	<input type="checkbox"/>	Post code:	_____ Tel: _____
Total amount payable	£	<input type="text"/>		