



# St Mary's University Student Newsletter



April 2022

## Hello Simmie,

In March we celebrated **Spring Graduation** on our beautiful campus, you can read more and watch our short video [here](#).

Are you considering **postgraduate study in the [Humanities and Theology](#)**? Join us on 26th April 2022 from 2-5pm Waldegrave Suite to find out more.

We're making improvements to your Library experience. In the early summer, **Naylor Library** will be relocated to the main campus library, and we'll begin work to create improved learning and study environments in both spaces. You can find out more [here](#).

Previous editions of the student newsletter are available [here](#).

## Is this working for you?

In October 2021 we launched the first SIMMIE Newsletter! Since then we've been providing a fortnightly update on key things you need to know from across the University. If you have 2 minutes spare we'd love to hear your thoughts.

**[Complete this short survey and tell us what you think.](#)**



## Save the date: Festival of Learning & Teaching

### Festival of Learning and Teaching 2022:

Inclusive Curricula and Learning Environments

Join us on Friday 17th June for the Festival of Learning & Teaching. The Festival provides a forum to communicate and share ideas about good practice in learning and teaching, this year's theme is Inclusive Curricula and Learning Environments.

If you'd like to be involved in shaping sessions for this event, we'd welcome proposals from our university community.

**[To find out more click here.](#)**

## Don't miss your chance to win

Calling all final year undergraduate students! The National Student Survey (NSS) closes on 30th April. It's your chance to tell St Mary's what you think of your course and help them improve the experience for future students. There's a chance to win 1 of 4 £100 Love2Shop vouchers and claim a free drink from the Ref/DV once you've completed it.



[Click here to complete the survey.](#)

## An update on our EDI activities



As lectures have officially ended for the spring holiday, and most students are away from campus, it's a very brief Equality, Diversity, and Inclusion entry for the newsletter. However, as they are two of the most important festivals for two of the biggest UK faith groups, I wanted to mark the celebrations of Passover (Pesach) and Easter coming up this week, alongside the continuation of Ramadan, which was featured last time and Vaisakhi, the Sikh New Year. To find out more about the faith festivals, visit the [multifaith network webpages](#).

The university is closed for four days (14th-18th April) and so, whether you have any faith or none, we wish you all a very happy and relaxing break with sunshine (hopefully) and chocolate aplenty!

[Read our full EDI update here.](#)

## Student Engagement Awards now open!

Has a fellow student made a difference in your experience at St Mary's this year? Maybe an amazing Course Rep, Senior Resident, or someone in your class who has gone above and beyond in supporting you? This is your chance to say thank you and nominate them for an award to recognise their contributions, and achievements.

Nominations must be received by midnight on Sunday 24th April. You can learn more about the awards in our [news article](#).

[Submit your nominations here.](#)



## Support over Easter bank holiday



The University closes from 5pm on Wednesday 13th April and re-opens at 9am on Tuesday 19th April 2022.

St Mary's Security remains on-site throughout the closure period for emergencies only and can be contacted on: Tel: 0208 240 4335.

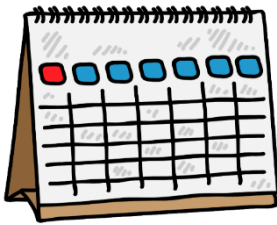
Services provided by Togetherall and Student Space are available during the Easter break:

- [Togetherall](#)
- [Student Space](#)

**[Further information is available here.](#)**

---

## Dates for your diary



### April 2022 (Click the links for event details)

- 19 - [Sport track closes for refurb](#)
- 24 - [Student Engagement Awards close](#)
- 30 - [NSS closes](#)

### May 2022

- 3 - Save the Date: Student Heart launch event
- 16 - [Student REC survey closes](#)

### June 2022

- 17 - Festival of Learning & Teaching

Information about these campaigns will be shared on the Student Union and St Mary's University social media channels

St Mary's University 2021  
Click [here](#) to unsubscribe or to change your Subscription Preferences.

Click [here](#) to view this email in your browser.