



# Student Newsletter November 2022



The next newsletter will be sent on Wednesday 30 November

**Hello Simmie,**

The Student Newsletter is written for you, if there's content you'd like to see more of email us at [ourfuture@stmarys.ac.uk](mailto:ourfuture@stmarys.ac.uk).

## Celebrating InterFaith Week

This week we are celebrating our diverse student and staff community during [Interfaith Week](#). Join us tomorrow in the SU Hall from 4:30pm to hear live musicians and poems.

There is a range of student-run groups at St Mary's - as well as societies managed by the Students' Union - related to race, gender, sexuality, and disability.

[Click here to find out more.](#)



**Inter Faith  
Week**

13 - 20 November

## Building Positive Relationships project



As part of InterFaith Week, we are also participating in a project (led by Coventry University), that aims to support universities and religion and belief-focused organisations to enhance inter and intra-faith relations among students, better equipping them to relate respectfully to those with a different outlook from their own. You can learn more about the Building Positive Relationships project below. Further information about how you can get involved will be available soon.

[Learn more about the project here.](#)

## Get involved with Sport at St Mary's

We've got just less than a month left of fixtures remaining for this year! Head over to the Sports fields, or Teddington Lock every Wednesday afternoon to watch some home games and cheer on our teams!

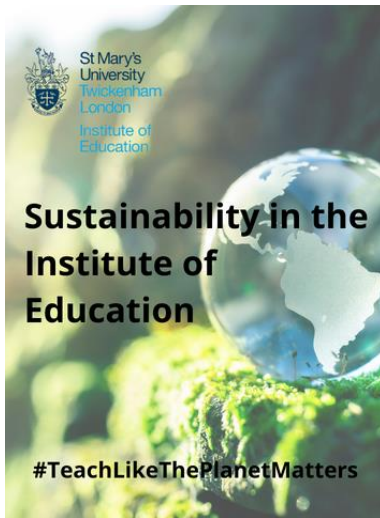
For a list of fixtures or queries on how to join a club, please email [jen.fairfield@stmarys.ac.uk](mailto:jen.fairfield@stmarys.ac.uk)

To get involved in any social/recreational sport, please email [simon.jackson@stmarys.ac.uk](mailto:simon.jackson@stmarys.ac.uk)

[Find out about Sports Clubs and memberships here.](#)



## Sustainability in IOE



Following last week's [Sustainability Week](#) at St Mary's, we're continuing to raise awareness of local and global sustainability issues, educate our University community on sustainability best practices, and work to build a more sustainable campus for future generations.

The Institute of Education is working towards a more transformative approach to curriculum planning by drawing on the fundamental values of sustainability as a way of thinking that is underpinned by all three pillars: social, environmental, and economic.

[Click here to find out more.](#)

## Information about industrial action

Next week across the UK staff from across 150 UK higher education institutions will be striking, in disputes relating to pay and working conditions\* and USS pensions.

The strikes are due to take place on 24, 25 and 30 November 2022. Please assume that teaching and learning activities are going ahead as normal, including the supervision of projects and dissertations. You must attend as planned unless you hear otherwise from your lecturer or programme lead. Similarly, you should continue to submit assignments to existing deadlines.

**We will send an email with further information and a set of FAQs to your St Mary's email.**



## Check out what's on in the SU

Join the SU over the next two weeks, as they'll be hosting Simmie Safety Week and RAG Week. You can check out their website and social media for more info on exactly what's going on.

During RAG Week (Raising and Giving), your SU will be holding a range of fun-filled events with the initiative to raise money for Ordinary 2 Extraordinary (O2E) – a charity focused on improving the lives of children in need.

Other key events and activity dates have been added to the calendar section below! Click here to find out more

[Click here to find out more.](#)

## Winter Season in the Theatre

As part of their Winter season Level 6 Acting students are performing in two exciting productions in the Drama StMarys Theatre. Tickets are £5 from [ticket source](#). Book your tickets now for the following shows:

### The Government Inspector

Thursday 8th December at 7:30pm

Friday 9th December at 3pm and 7:30pm

### Animal Kingdom

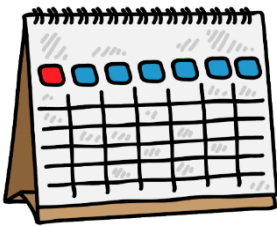
Thursday 15th December at 7:30pm

Friday 16th December at 3pm and 7:30pm

[Find out more here.](#)



## Mark your calendars!



### November 2022

- **13 - 20 - InterFaith Week**

17 - 4.30pm – 5.30pm Faiths in Tune

21 - 4:30pm [The Richmond Interfaith event](#)

- 21 - DV Lounge - [Watch the Fifa World Cup](#)
- 21 - 25 - SU - Simmies Safety Week
- 28 - SU Lounge - Quiz night 7pm - 11pm
- 29 - SU Lounge - Family Fortune 8pm - 11pm
- 29 - SU Lounge - Socials Night 7pm - 11pm

### December 2022

- 1 - Christmas Light Switch-on from 4:30pm on the Piazza

- 1 - SU Lounge - Simmie £shop 11am – 2pm
- 2 - SU Lounge - Karaoke 7pm - 1am
- 2 - 3 - Pool Room - Big Brother

St Mary's University 2021

Click [here](#) to unsubscribe or to change your Subscription Preferences.

Click [here](#) to view this email in your browser.