



# St Mary's University Student Newsletter



December 2021

## Hello Simmie,

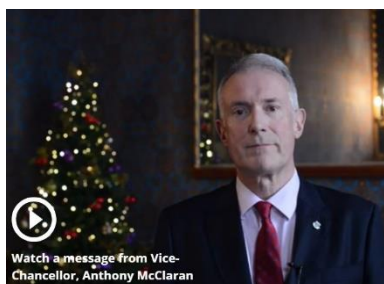
This is the last student newsletter of 2021! We'll return in the new year to continue updating you on our EDI activity, the latest academic news, plus updates from across our student support teams. We hope you've found the fortnightly newsletter a useful update.

All previous editions of the new student newsletter are available [here](#).

### COVID-19 Update

The latest St Mary's COVID-19 update is available [here](#). The University will be monitoring guidance through the Christmas break and will advise students via email should there be any changes.

## Merry Christmas from Vice-Chancellor, Anthony McClaran



Dear St Mary's student,  
As we draw to the end of what has been for us all a demanding year, I have recorded a video (which you can [watch here](#)) to thank you for all you have contributed to St Mary's this year and to wish you the very best for the forthcoming Christmas holiday.

We've also created a video to recognise that, despite the challenges and demands of coping with the impact of the pandemic, there have been many positives that have come out of 2021 for the St Mary's community, which will play at the end of my message.

Wishing you all a joyful Christmas and a happy New Year.

Anthony McClaran  
Vice-Chancellor

## An update on EDI activities

St Mary's is committed to nurturing an inclusive and diverse community that is open and accessible to all students. We take pride in the diversity that exists in both our students and staff.

In each newsletter, we'll provide an update on the latest activities from across our student networks. Read all about the latest news from across our student networks

[To read the full update click here.](#)



## Unlock your potential with LinkedIn Learning



All St Mary's students have access to LinkedIn Learning, a continually growing and evolving library of training videos and tutorials covering a wide range of topics.

Whether you're looking to broaden your knowledge and enhance your academic skills, or gain extra practical skills to make you the top candidate for your dream job - LinkedIn Learning has a course for you.

Below are some examples of LinkedIn Learning's most popular courses to aid in developing your soft skills

- Building resilience
- Leading with Emotional Intelligence
- Critical Thinking
- Managing Your Time

[Discover more benefits of LinkedIn Learning here.](#)

## Be part of an exciting new research project

This is your chance to be part of a nationwide research project exploring worldview diversity at university. The survey takes less than 15 minutes to complete and is open to all students.

By learning about the experiences students have with diversity – whether religious or cultural, for example – this research aims to inform university policies and practices that will make a difference to the student experience.

Taking part is completely voluntary and confidential. You can [visit the research project page](#) or [follow the project on Twitter](#) for more information. Thanks for your help!

[To take part in the survey, please click here.](#)



Scan the QR code to access the survey

## Help Shape St Mary's - Share your feedback



At St Mary's, we are keen to learn from the feedback we receive, as we are committed to enhancing our student experience.

In response to your feedback, we've taken a number of initiatives and actions to improve service and to show that sharing feedback has a positive outcome. Below of some of the ways we've acted on your feedback:

[Find out how your views help improve life for Simmies here.](#)

## Academic Integrity Awareness Top Tips

Last week we ran the first-ever Academic Integrity Awareness Week at St Mary's. The week was designed to highlight the importance of ethical academic practices and to help you understand how to demonstrate academic integrity in your own work. To further support this we have produced a series of Top Tips that you can access via the link below.

If you have any questions or want to seek advice about any aspect of academic practice, do get in touch with your programme team or your personal tutor.

[Learn more about Academic Integrity Awareness Top Tips.](#)



## Quick round up of other news



### Mindfulness Advent Calendar

To support you in the run up to Christmas, our student hub support manager, Deborah Flanagan has created a mindfulness calendar. Click the link below to discover some mindful activities that you can build into your day.

[Find out more here.](#)



### Need access to IT equipment?

There are a number of laptops, headphones and wi-fi enabled dongles available for long term loan to students (undergraduates and PGCE students only) whose financial situation prevents them from being able to purchase the required IT equipment for their study.

[Find out more here.](#)

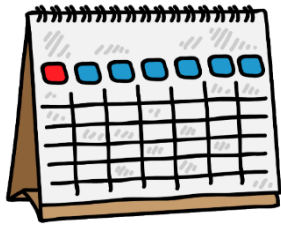


### Removal of on-site ATM

The cash machine (located in the Shannon corridor) is being removed in January 2022 following our move to cashless catering outlets and low use of the cash machine. If you should need to withdraw cash we have listed below the top 3 closest ATM's to St Mary's University.

[Find out more here.](#)

## Key dates for your diary



### January 2022

- 17th - Stretch Your Legs and Beat the January Blues!

Keep an eye on the Student Union and St Mary's University social media channels for updates on activities.

St Mary's University 2021

Click [here](#) to unsubscribe or to change your Subscription Preferences.

Click [here](#) to view this email in your browser.