



# Student Newsletter January 2023



The next newsletter will be sent on Wednesday 1 February

## Happy New Year, Simmies!

We hope that you had a relaxing break, and are returning refreshed and looking forward to 2023. In this edition, we've provided details about next week's Reconnect Week, exam support, and some other key updates.

## Download your Reconnect Week timetable

**refreshers** 23  
welcome & welcome back simmies  
23rd - 27th January 2023

presidents big quiz  
karaoke  
support our simmies  
international social

Next week is Reconnect Week and we've got a full programme of activities planned. From free exercise classes to budget tips, educational conferences to fun SU events - there's something for everyone! Plus, the chance to win some prizes.

[Download your copy here.](#)

## Calling all final year undergraduates

The National Student Survey opens on **30th January** - Don't miss your chance to tell us about your university experience and help [shape the future of St Mary's](#). By completing the survey, you'll also help other students make an informed decision about their choice of course and university.

[Find out more here.](#)



## Information about upcoming strike action

Dates for further strike action, scheduled to take place during February and March, are due to be announced soon.

Once full details about strike action have been confirmed, we will provide updated information online about how this may impact you.

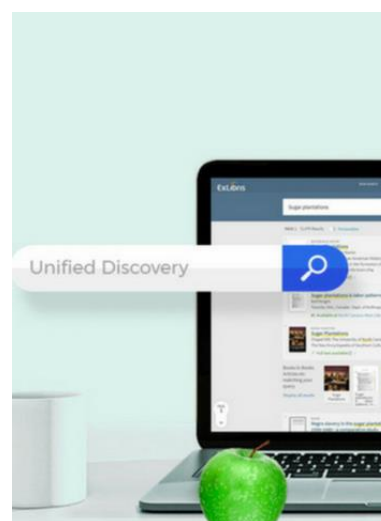
## Save your library loans and search history

We're changing the current provider of our library discovery tool, to provide you with a more effective service - there's an action you need to take **before 31st January**.

Your loan history can't be migrated. To avoid losing this information please contact The Hub via [library@stmarys.ac.uk](mailto:library@stmarys.ac.uk) or visit them in person, in the library.

The benefits of the new system include simplified logging into your Library Account; the ability to save your search results and searches; the option to search by voice; and you can also update your preferred contact details yourself.

[Click here to find out more.](#)



## Nationals and regional selection success

Shout out to the following students who have been selected to represent their National and Regional University squads!

- Women's Hockey Team - **Maisie Davidson**, Club President, and **Kiera Dawes**, Captain
- Men's Rugby League team - **John Stuttle**, **Dom Aston**, **Sam Winney**, **Harry Richard**, and **Toby Harrison**.
- Men's Lacrosse Team - Captain and Vice-Captain **Jack Casebourne** and **Sam Haswell**.

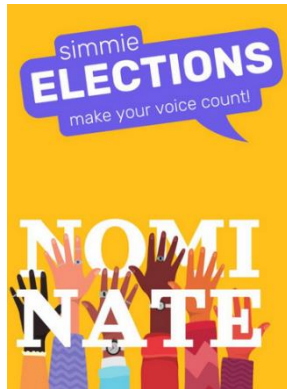
[Read the full story here.](#)

## Culture on a budget

Grab your £5 art pass and get free entry to hundreds of museums and galleries across the UK, and 50% off major exhibitions. Plus, exclusive paid opportunities in the arts



[Read the full story here.](#)



## SMSU elections are now open!

Could you be our next Student Life or Education President? Or perhaps you might be interested in one of our four BRAND NEW vice-president roles! Nominations close on 10th February. Voting takes place from 17 - 24 February.

To learn more about the roles available, how to sign up and submit a nomination

[Click here!](#)

## The SU is recruiting

They're looking for students who want to join our crew and help with the smooth running of the SU!

The two posts we have available are...

- SU Crew (£11.05/hr)
- SU Media Crew (£11.05/hr)



[Click here to learn more.](#)

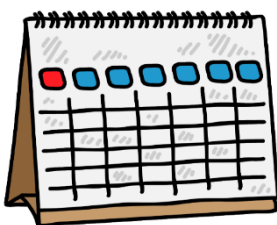
## Blue Europe 2022 "Robert Schuman" writing contest

Blue Europe is both a think tank and an editorial project about the links between Central and Eastern Europe. They are currently running a writing contest, inviting students to write about their knowledge field – on any scientific topic of their choosing

[Click here to learn more.](#)

[Check out upcoming events from your SU here!](#)

## Mark your calendars!



January 2023

- 19 - [PGCE online open event](#)
- [23 - 27 - Reconnect Week](#)
- [25 - Study skills - online drop-in session \(1pm - 2pm\)](#)
- [27 - Get your Library loan history before the switch](#)
- [30 - NSS Opens](#)

- 30 - SU: Culture Week
- 31 - [PGCE open event](#)

### **February 2023**

- 6 - SU: Sexual Harassment Awareness Week
- 13 - SU: Volunteering Week
- 27 - SU: Random Acts of Kindness Week

### **March 2023**

- 6 - SU: SIMMIE girls can
- 29 - SU: Varsity

St Mary's University 2021  
Click [here](#) to unsubscribe or to change your Subscription Preferences.

Click [here](#) to view this email in your browser.