



St Mary's University Student Newsletter



April 2022

Hello Simmie,

We're reviewing the Simmie newsletter and need your help! **Please could you spare 1 minute to let us know what you think of the content, frequency, and topics you receive in this fortnightly newsletter? [Share your thoughts here!](#)**

Previous editions of the student newsletter are available [here](#).

Optional Module Selection open now

Optional module selection is open now

Speak to your tutor to find out more.

Closes: Monday 9 May at midnight



Undergraduate students in Years 1 and 2, it's time to start thinking about the modules you'd like to study for Academic Year 22/23.

Ask your programme team if you need to choose modules for next year and they can advise you of your options and pathways.

Students on courses who do not have optional modules will be enrolled automatically in these modules and do not need to do anything.

[To find out more click here.](#)

The National Student Survey (NSS) closes on **30th April**. All final year undergraduate students, this is your chance to tell St Mary's what you think of your course and help them improve the experience for future students. There's a chance to win 1 of 4 £100 Love2Shop vouchers and claim a free drink from the Ref/DV once you've completed it.

[Click here to complete the survey.](#)



Sport, Allied Health & Performance Science Employer Fair

Thursday
12th May
12-2pm
SU Lounge



Meet a range of employers to gain insights about job opportunities and entry routes

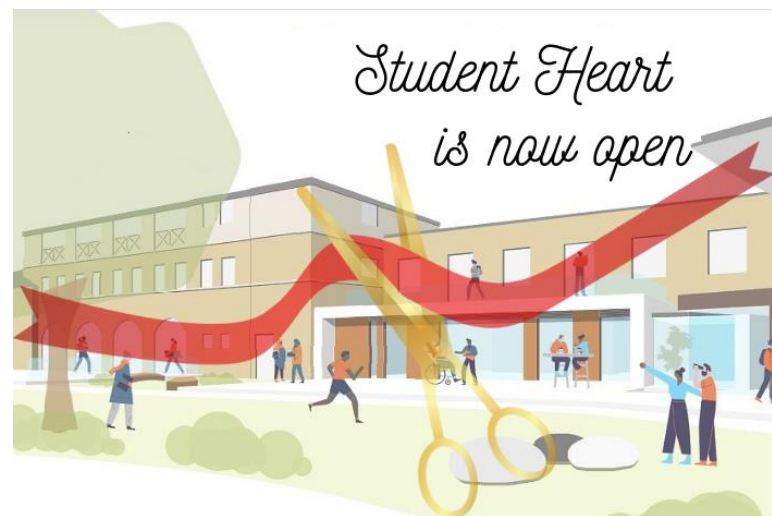


Student Heart open event (3rd May)

Please join us on **Tuesday 3rd May at 4:15pm** in the Dolce Vita as we officially open and welcome you to the new and updated Dolce Vita and DV Lounge!

Come and enjoy some pizza and sample a selection of mocktails and cocktails from our new bar menu.

[Find out more here.](#)



An update on Naylor Library



Naylor Library closes for the weekend from Friday 3rd (7pm) to Monday 6th June (9am) to allow staff to move the following resources and collections back to the campus library:

- Education - classroom resources, teaching resources, and children's library – will move to the first floor of the campus library
- Teaching theory resources – will move to the ground floor of the campus library.

The Naylor building will undergo extensive changes as we create a more effective space for Sports Rehabilitation learning and teaching. The ground floor will be converted into an Allied Health Simulation-Based Learning hub. Adopting forefront technology in classrooms, break-out spaces, and a new Intensive Care Unit simulation suite. These exciting resources will be used to enhance applied placement and experience through interactive role-play and flexible learning, in

alignment with the University's five-year digital transformation strategy.

[Further information is available here.](#)

St Mary's alumni and Student Sport Administrator shines at Euro Hockey League



Alex Rooney graduated from St Mary's Sports Coaching Science in the summer of 2019. Alongside his studies, Alex continued his passion for playing hockey and joined the St Mary's Men's Hockey Club, where he was president for 3 successive years. Alex now works in Sport St Mary's as Student Sport Administrator, coordinating British Universities & Colleges Sport (BUCS) fixtures & other student sport activities. He now plays for Surbiton Hockey club, and over the Easter weekend, he and other sportsmen and women from the club headed over to Amsterdam to take part in the Euro Hockey League (EHL). **He tells us more here...**

An update on EDI activity

The Race Equality Charter Student Survey remains open until 16th May. You can complete the survey [here](#).

This week is [Lesbian Visibility Week](#) - check out Tweets from Lis, the co-chair of the LGBTQ+ Staff Network (@smu_lgbtq) about great lesbian fiction books or TV shows.

Next week is Deaf Awareness Week, look out for activities related to this. If you are concerned that your hearing is impinging on your studies or your social life at St Mary's, get in touch with the [Disability and Dyslexia Service](#) and see how they might be able to help.

And finally, Sunday 1st or Monday 2nd May (dependent on the new moon) will be Eid al-Fitr for our Muslim students and staff, as they mark the end of Ramadan. Eid Mubarak to you all!

[Click here to read the full update.](#)



SMSU: Summer Ball tickets now on sale!



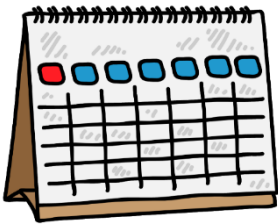
Tickets are on sale for this year's SMSU's annual Summer Ball, taking place on **Friday 20th May**. This year's spectacular theme is Cirque du Simmie.

Tickets start from £35 and are available [here](#). Your entry includes...

- Funfair with bumper cars, a ferris wheel, and rides galore from 7pm-11pm
- Free candyfloss
- Three bars including one outdoors
- A silent disco from 9pm-1am
- A TOP SECRET headliner to be announced (keep your eyes peeled on Insta @stmaryssu)
- DJ sets till 2am
- Plenty of photo opportunities

[Sign up for your summer ball tickets](#)

Dates for your diary



April 2022 (Click the links for event details)

- 30 - [NSS closes](#)

May 2022

- 3 - [Student Heart launch event \(4:15pm in DV\)](#)
- 12 - [Business, Law, Society and Culture Fair \(BLSC\)](#)
- 16 - [Student REC survey closes](#)
- 20 - [SMSU's annual Summer Ball](#)
- 25 - Simmie Newsletter survey closes

June 2022

- 3-6 - [Naylor Library closed](#)
- 17 - [Festival of Learning & Teaching](#)

Information about these campaigns will be shared on the Student Union and St Mary's University social media channels

St Mary's University 2021

Click [here](#) to unsubscribe or to change your Subscription Preferences.

Click [here](#) to view this email in your browser.